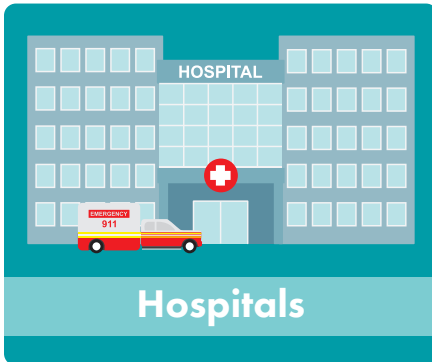


# 2011 DHS Sensitive Locations Memo

## What are sensitive locations?

Immigration enforcement actions generally are not to occur at sensitive locations, such as:



Hospitals



Schools (all levels from preschool through college, also vocational and trade schools)



Places of worship or buildings rented for religious services



Public religious ceremonies, such as funerals



Public religious ceremonies, such as weddings



During a march, rally, parade or other public demonstration

## Special exceptions for sensitive locations

Actions may occur at these locations in special circumstances including:

- someone who poses an imminent threat, such as a national security risk
- immediate pursuit of a felon or person who poses danger to the public
- risk of destruction of property

## ICE Officers' Conduct in Exceptional Circumstances

If actions may occur at these locations in special circumstances, ICE officers follow these guidelines:

- Officers must have obtained high-level ICE approval
- Officers must make substantial efforts to avoid alarming the community
- Officers must be discrete and limit their time at the sensitive location